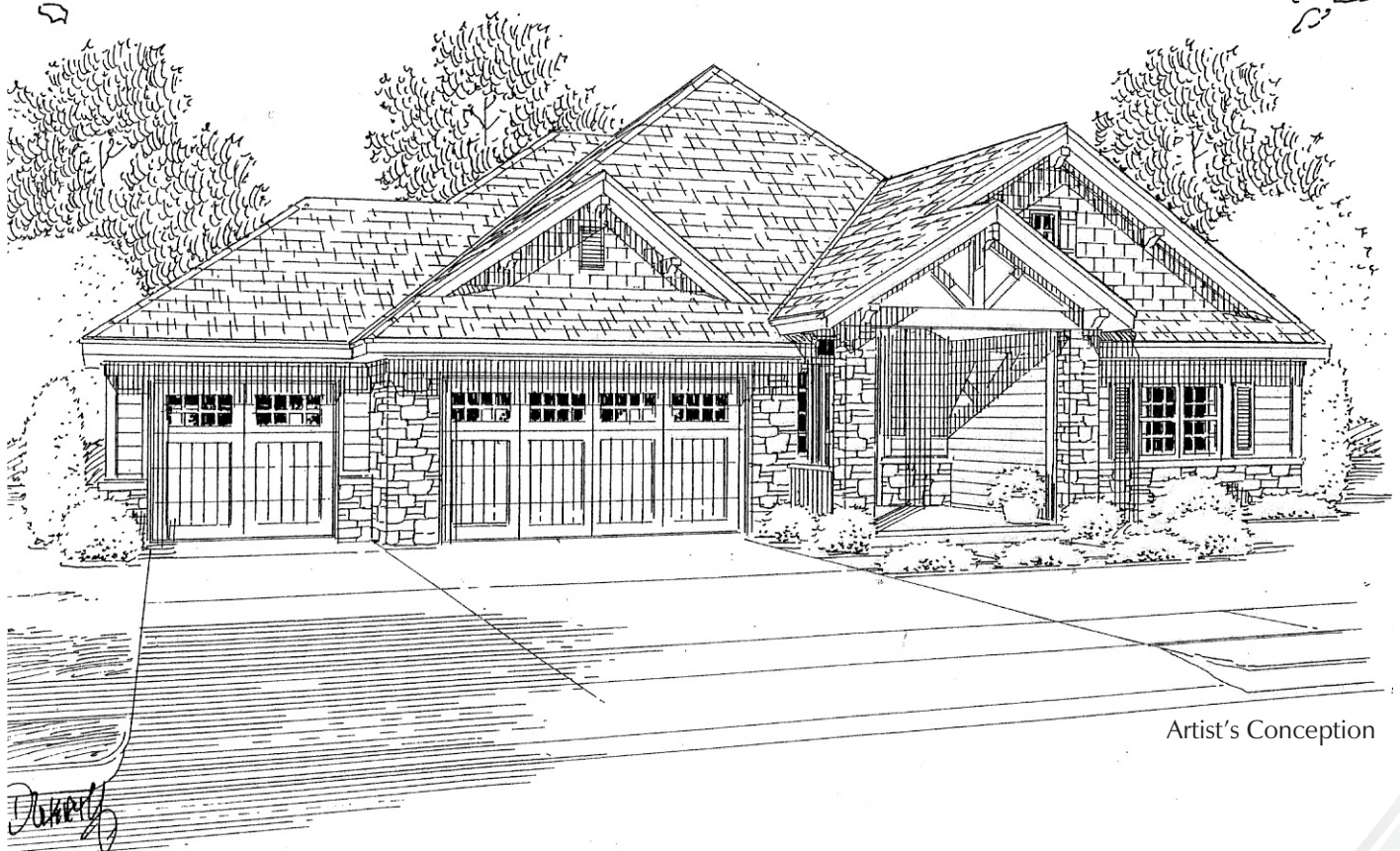


CUSTOM ON-SITE

BUILDERS INCORPORATED

VAIL VALLEY II RANCH



Artist's Conception

2218 square foot ranch with 2 bedrooms and 2.5 baths. Great room is open to nook and kitchen with large island. Large master suite with walk-in closet and luxury master bath. 2 car garage with optional 3rd bay.

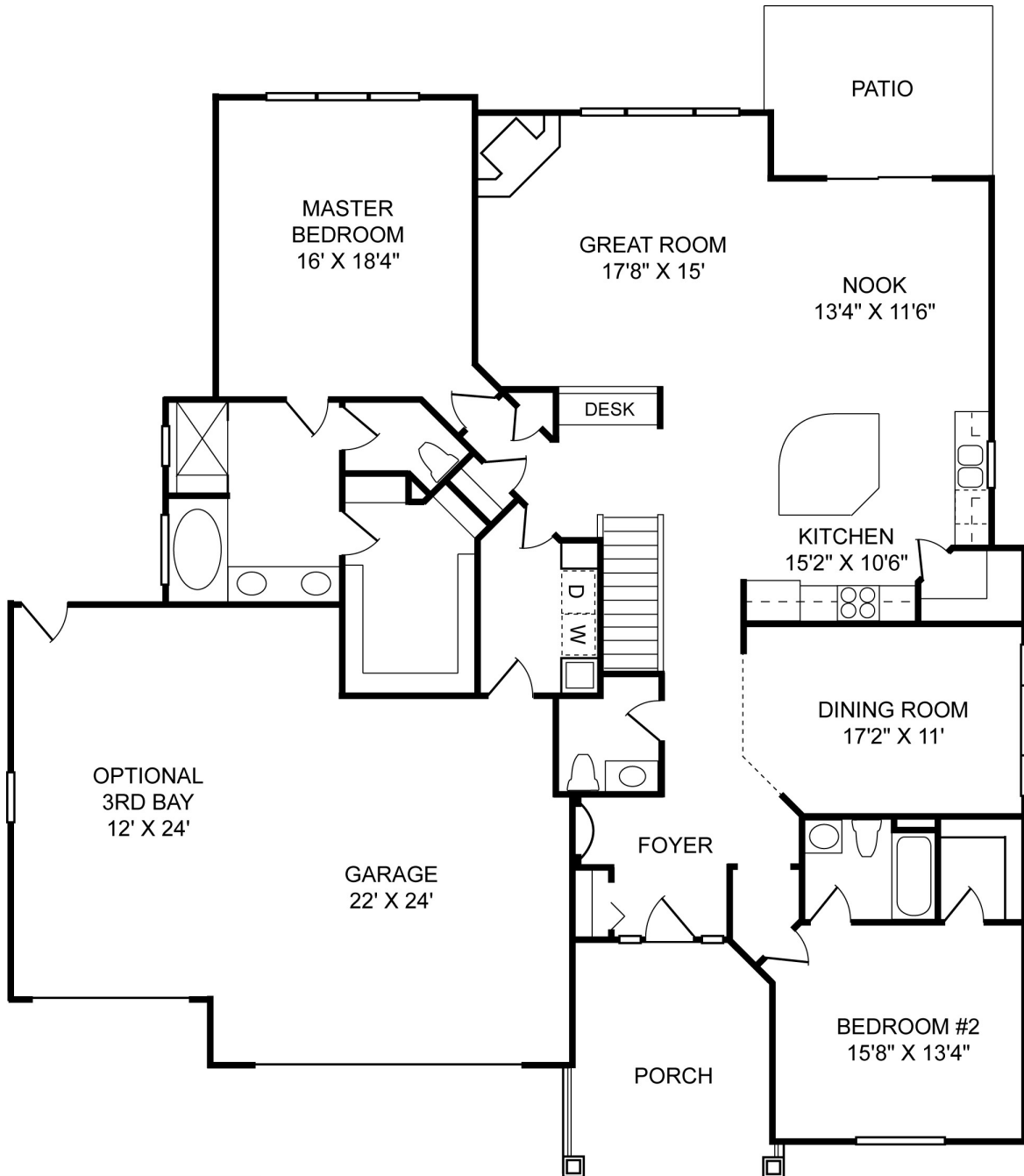
CUSTOM ON-SITE BUILDERS INC.
1327 WEST 5TH STREET
LOVELAND, COLORADO 80537
WWW.COSBUILDERS.COM

VAIL VALLEY II

2218 Finished Sq Feet
4436 Total Sq Feet
2218 Unfinished Sq Feet

2218 Sq Feet Main Level
2218 Sq Feet Basement

CUSTOM
ON-SITE
BUILDERS INCORPORATED



MAIN LEVEL

CUSTOM ON-SITE BUILDERS INC.
1327 WEST 5TH STREET
LOVELAND, COLORADO 80537

WWW.COSBUILDERS.COM



Please note that renderings are artist's conceptions and are subject to change. The builder reserves the right to change prices, plans, specifications or features without notice. All square footage are approximate. Copyright © 2004 Custom On-Site Builders Inc.